

**Agreement**  
**on Space Program in Genetic Improvement of Beef and**  
**Dairy Cattle and Capacity Building for the Veterinarians in**  
**Kyrgyz Republic**

**Between**  
**TNT Research and Institute of Livestock and Pasture in**  
**Kyrgyz Republic**

TNT Research and Chungbuk National University (Project Management Consultant, PMC) and Institute of Livestock and Pasture in Kyrgyz Republic discussed the space program for the construction plan of the Project. As a result of the discussion, it was agreed to plan a space program as written in the document and to promote the project based on this content.

2024.04.01.

**PM**

*Seong Ho Choi*

Seong Ho Choi,  
Chungbuk National University

**Director**

*Keimalev Zhanysbek Kalkanovich*

Keimalev Zhanysbek Kalkanovich,  
Institute of Livestock and Pasture

## Summary of the Construction Plan

### 1. Building Elements

Building	Floor	Elements
Dormitory	1 <sup>st</sup>	Kitchen(1), Dining hall(1), Office(1), Storage(1)
	2 <sup>nd</sup>	4-Person dormitory(10), Community Corridor(1), Storage(1)
Research & Training Center	1 <sup>st</sup>	Director's office(1), Office(1), Storage(1), Main auditorium(1), Lobby, Classroom(2)
	2 <sup>nd</sup>	Laboratory(3), Storage(1)

### 2. External construction and Landscaping

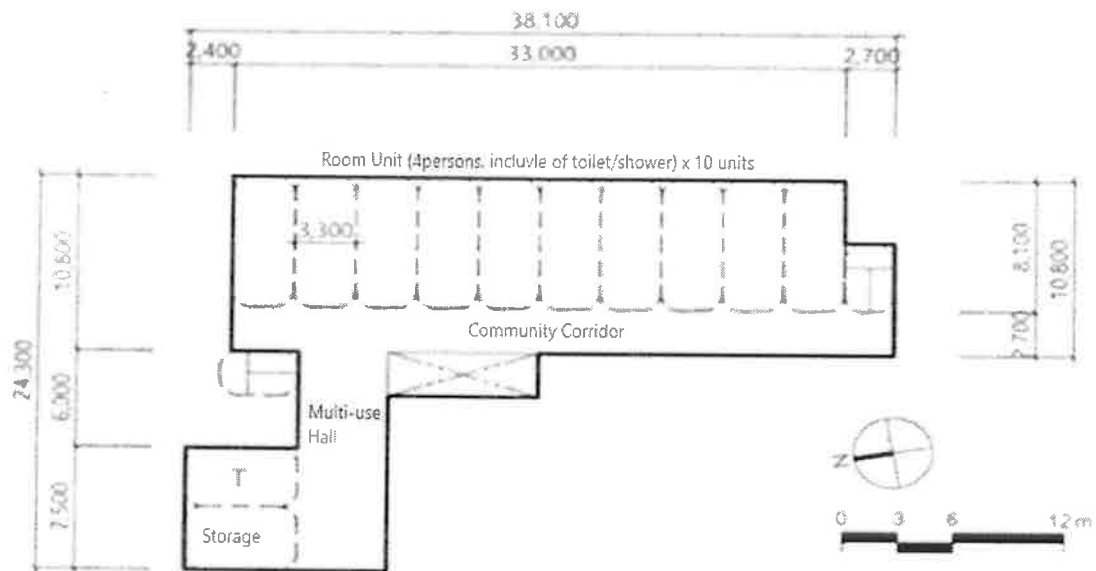
Category	Elements
Paving block	Including access road, separated by pedestrian/lane
Front gate and boundary fence	Consideration of the boundary fence on the front road side
Parking lot	Existing parking lot location
Landscape	Rest facilities/exterior lighting included

### 3. Remodeling

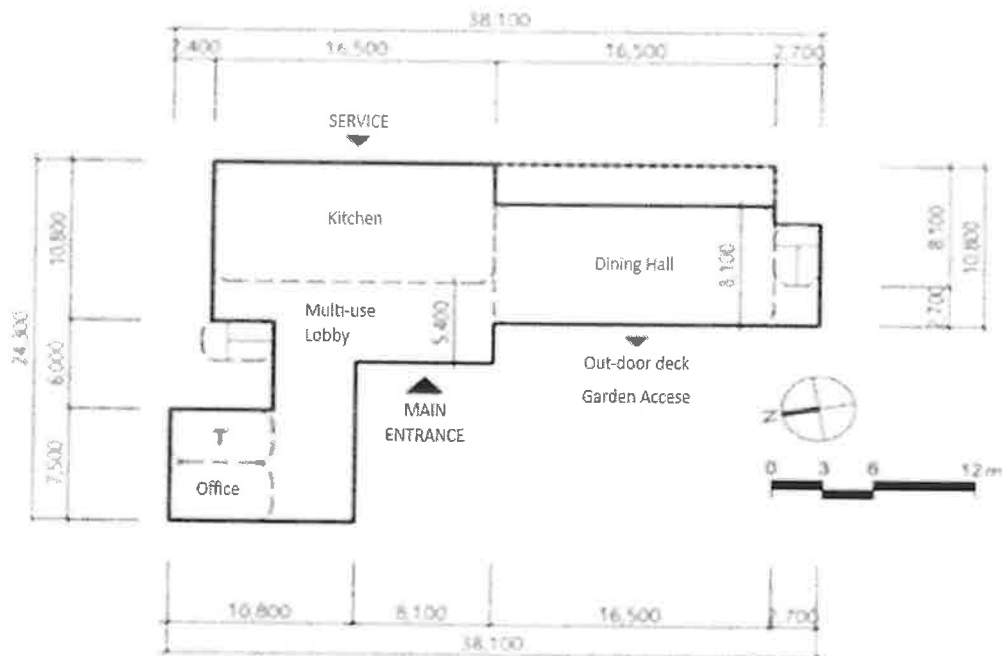
Category	Detail
Semen collection room	Repair and replacement of interior finishing materials, floor, walls/ceiling
Auditorium	Repair and replacement of interior finishes, floors
Parking lot	Replacement of visitor viewing window
Landscape	Rest facilities/exterior lighting included

## Space Program

### (1) Dormitory

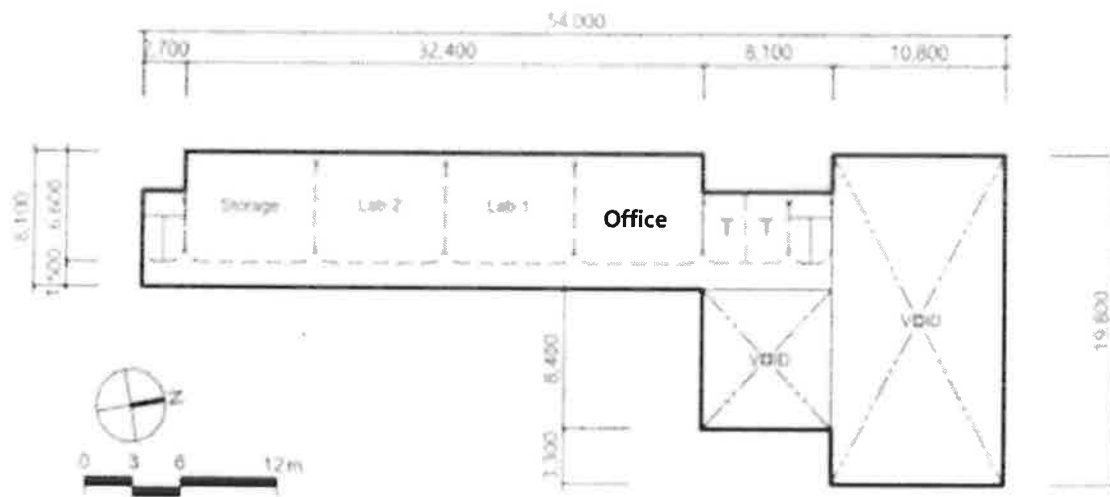


ex) Block diagram of the second floor plan of a dormitory building.

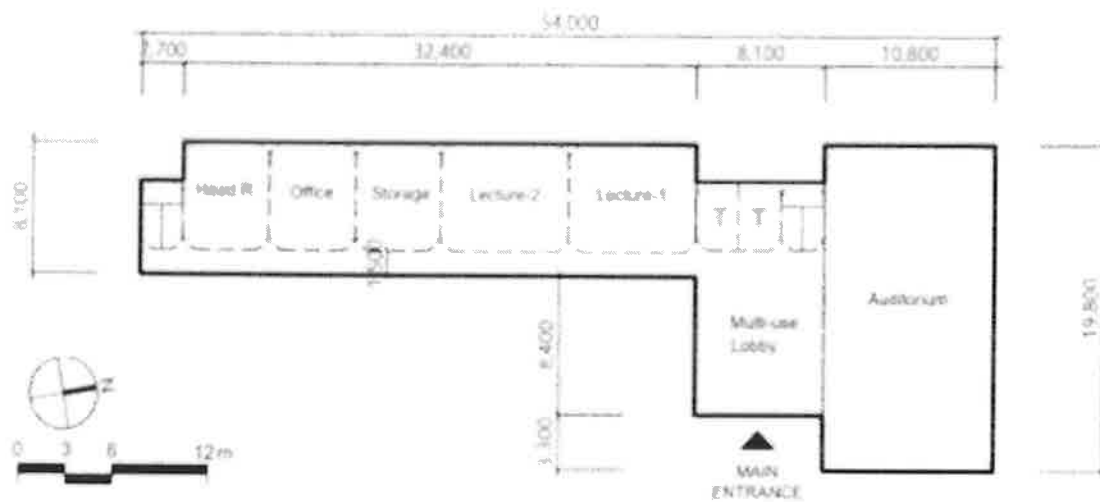


ex) Block diagram of the first floor plan of a dormitory building.

(2) Research & Training center

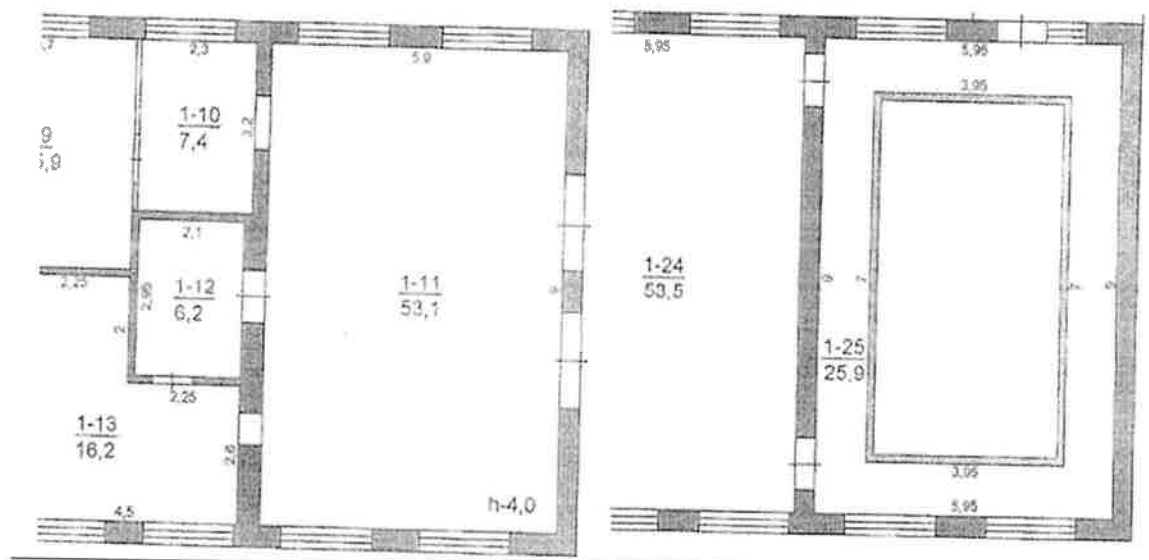


ex) Block diagram of the second floor plan of a research & Training center.



ex) Block diagram of the first floor plan of a research & Training center.

### (3) Semen collection room



Partial floor plan of the semen collection room (1st floor, left) and partial floor plan of the tour room (2nd floor, right)

### (4) Lab Drawings



(5) Area and utilization plan for each space

Building	Floor	Element	Area	Space Description
Dormitory	1 <sup>st</sup>	Kitchen	8.1mx16.5m	Space and facilities to provide artificial insemination training and prepare meals for approximately 100 professional trainees. <b>Supplies needed:</b> Kitchen utensils, Tableware(100 servins), Cookware, Large refrigerator, Large freezer, LPG gas range(for restaurants), Tables, Other kitchen related ites.
		Multi-use Lobby		Rest area for trainees and managers after meals <b>Supplies needed:</b> Several tables and sofas to relax on, desktop computer, TV
		office	26m <sup>2</sup>	Management office for dormitory managers <b>Supplies needed:</b> Desk, chair, table, sofa, TV
		Dining Hall	16.5mx8.1m	Dining space for 100 trainees and management personnel <b>Supplies needed:</b> Dining table and chair for 100 people, TV
	2 <sup>nd</sup>	Multi-use hall		A space where trainees can rest <b>Supplies needed:</b> Several tables and sofas to relax on, desktop computer, TV
		Storage	26m <sup>2</sup>	Warehouse for dormitory operation (storage of cleaning tools, other items, etc.)
		Community Corridor	247m <sup>2</sup>	A space where trainees can study and network <b>Supplies needed:</b> Several tables and chair for

Research & Training Center				study and networking, desktop computer, TV
		Dorm room(10)	3.3mx8.1m	Sleeping space for 4 people in each room <b>Supplies needed:</b> Built-in closet(for 4 people), desk and chair
	1 <sup>st</sup>	Director's Office	8.1mx6.1m	Director's office space for management and operation of research institute and training center <b>Supplies needed:</b> Desk, chair, table, sofa, TV
		Office	8.1mx6.1m	Management office for Research & Training Center managers Supplies needed: Desk, chair, table, sofa, TV
		Storage	8.1mx6.1m	Warehouse for Research & Training center operation (storage of cleaning tools, other items, etc.)
		Lecture-1	8.1mx6.1m	Lecture space for lectures by artificial insemination technicians and veterinarians <b>Supplies needed:</b> Desk top computer set, LED TV(monitor), Chair and Table (40 set), Constant temperature and humidity device, Water and sewage facilities(Can be expanded to the laboratory in the future)
		Lecture-1	8.1mx6.1m	Lecture space for lectures by artificial insemination technicians and veterinarians <b>Supplies needed:</b> Desk top computer set, LED TV(monitor), Chair and Table (40 set), Constant temperature and humidity device, Water and sewage facilities(Can be expanded to the laboratory in the future)

		Auditorium	19.8mx10.8m	Large lecture hall for seminars with 100 attendees <b>Supplies needed:</b> Desk top computer Set, Beam Projector, Large Screen, Desk and chair for 100 people,
		Multi-use Lobby		A space where trainees can study and network <b>Supplies needed:</b> Several tables and chair for study and networking, desktop computer, TV
	2 <sup>nd</sup>	Storage	8.1mx6.6m	Space for storing laboratory supplies, cleaning tools, etc. <b>Supplies needed:</b> Water and sewage facilities(Can be expanded to the laboratory in the future)
		Lab-1(General)	8.1mx6.6m	Laboratory for general experiment preparation <b>Supplies needed:</b> Water and sewage facilities, Constant temperature and humidity device, Water and sewage facilities, Fixed wall shelf(Experimental Tables), Experimental equipment(See attached document)
		Lab-2(Genome)	8.1mx6.6m	Laboratory for general experiment preparation <b>Supplies needed:</b> Water and sewage facilities, Constant temperature and humidity device, Water and sewage facilities, Fixed wall shelf(Experimental Tables), Experimental equipment(See attached document)
		Office	8.1mx6.6m	Office space for research purposes used by researchers working in general laboratories and genome laboratories <b>Supplies needed:</b> Desk, chair, table, sofa, TV



				Supplies needed:Water and sewage facilities, Water and sewage facilities(Can be expanded to the laboratory in the future)
--	--	--	--	---------------------------------------------------------------------------------------------------------------------------